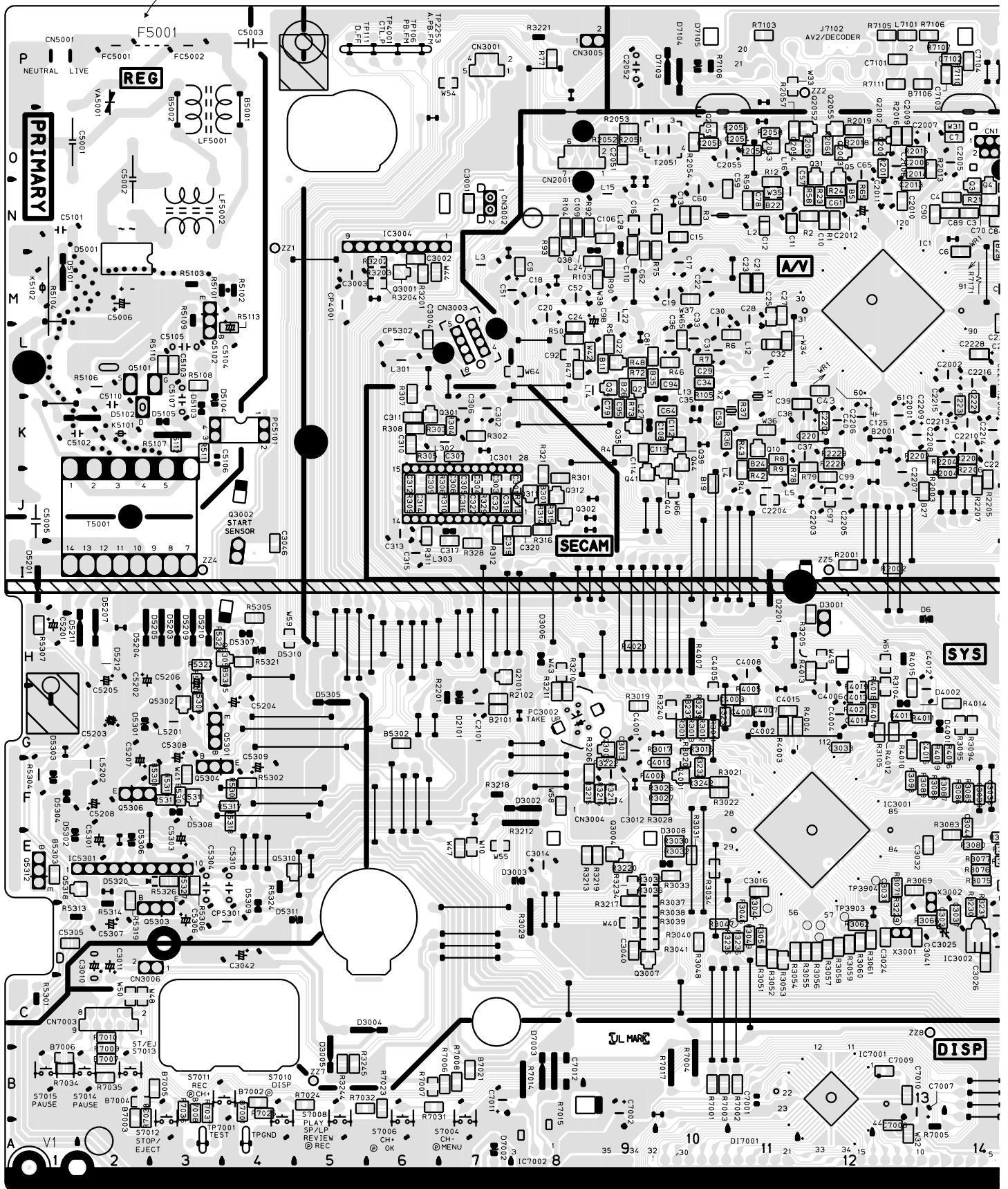
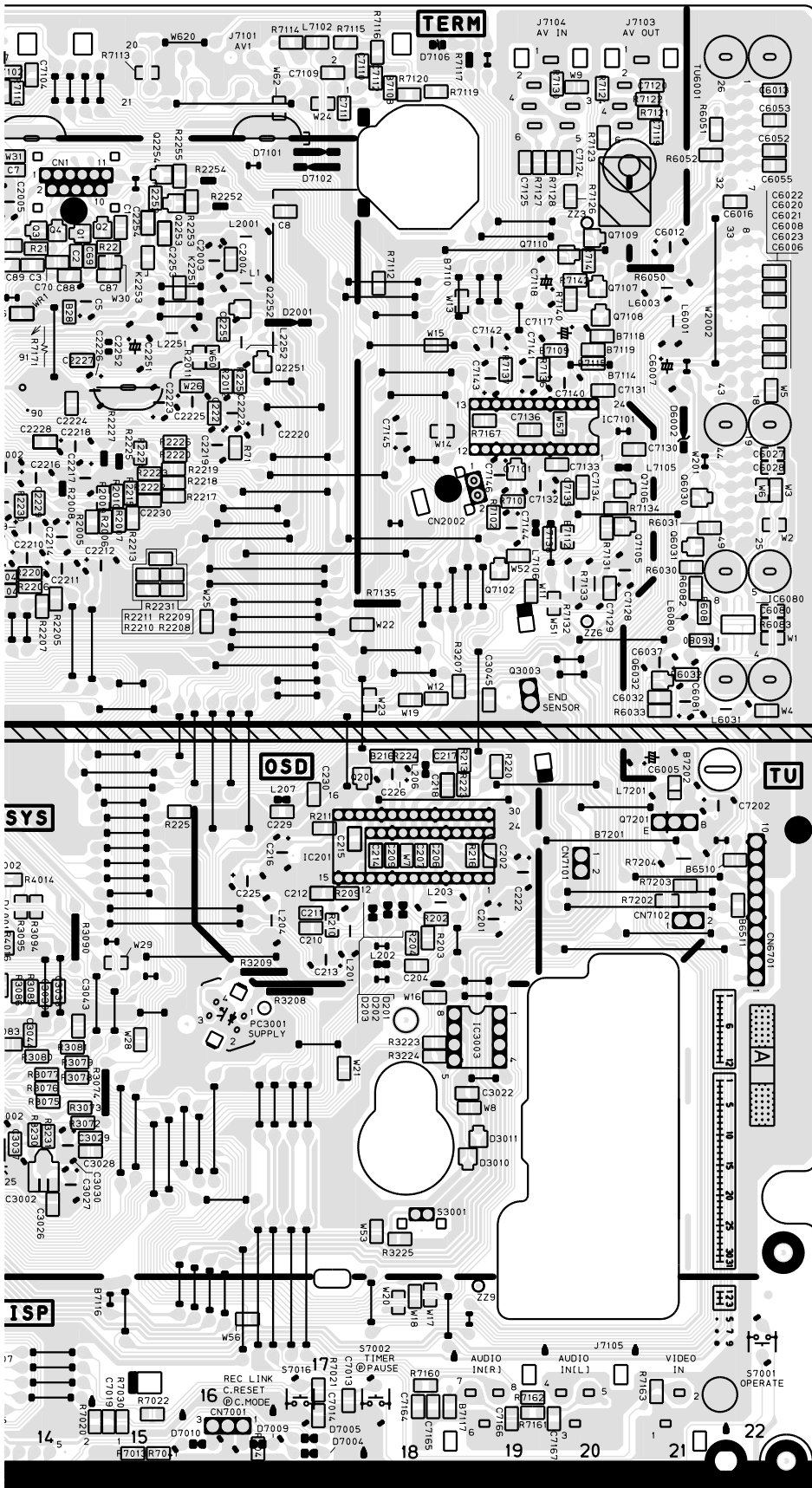


4.1 MAIN, A/C HEAD, R.PAUSE, MINI OPE AND LOADING MOTOR CIRCUIT BOARDS

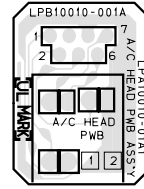
<03>MAIN
LPB10086-001F

DANGEROUS VOLTAGE

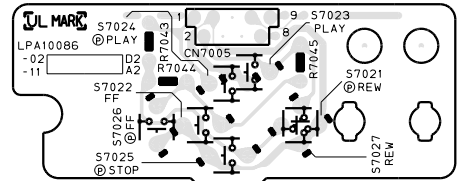




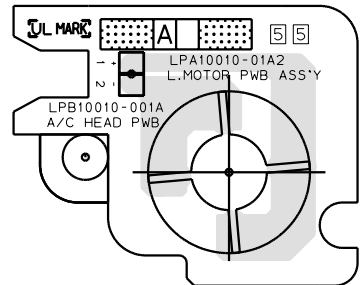
**<12>A/C HEAD
LPB10010-001A**



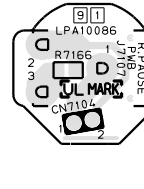
**<28>MINI OPE
LPB10086-001F**



**<55>LOADING MOTOR
LPB10010-001A**



**<91>R.PAUSE
LPB10086-001F**



4.2 DEMODULATOR SCHEMATIC DIAGRAM

5

4

3

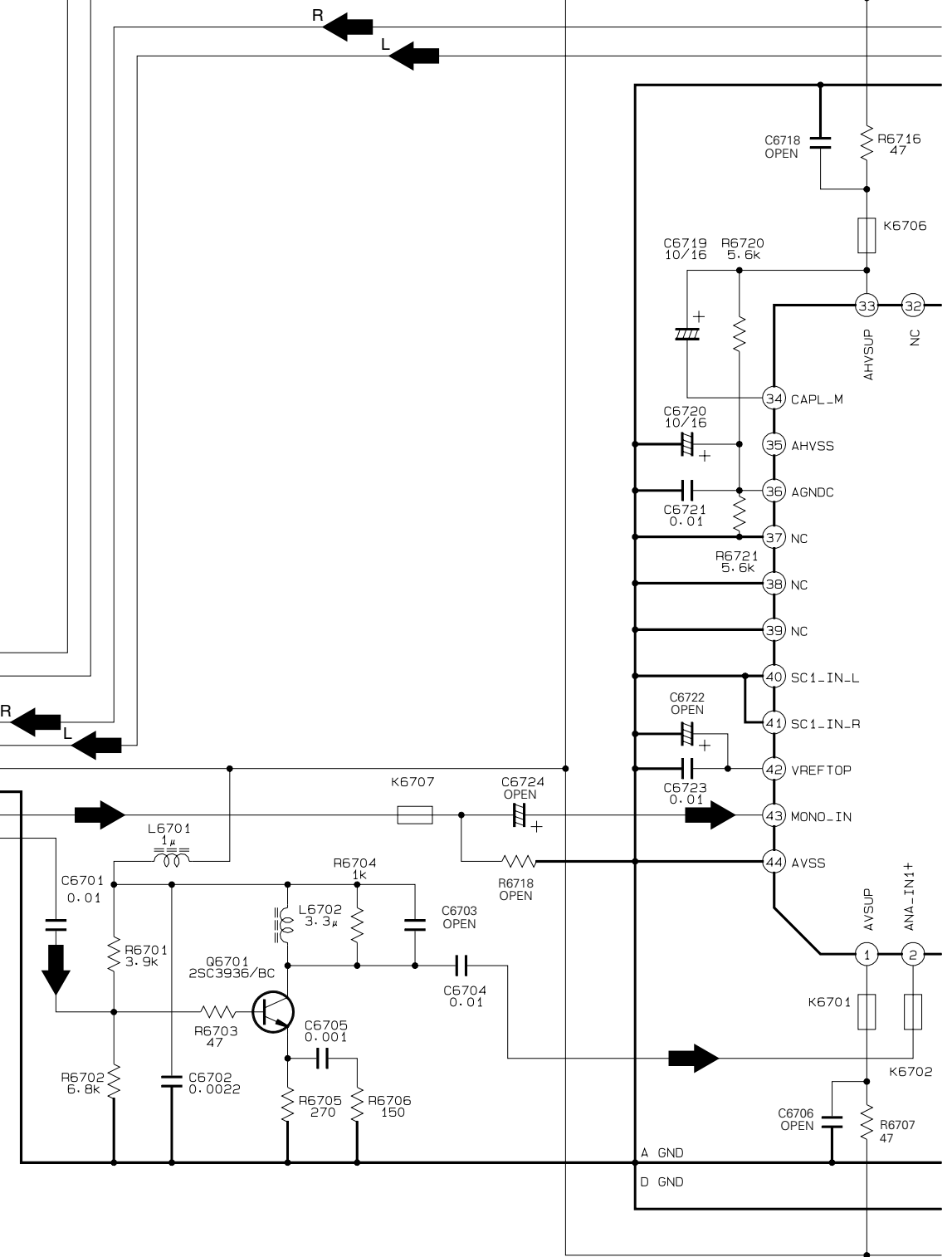
2

1

1 4 DEMOD

TO TUNER
CN6701
(Page 4-14)
CN6701

1 NC
2 I2C_DATA
3 I2C_CLK
4 TU_MUTE
5 DEMOD_[R]
6 DEMOD_[L]
7 SW5V
8 GND
9 COMP
10 SIF



4-4

A

B

C

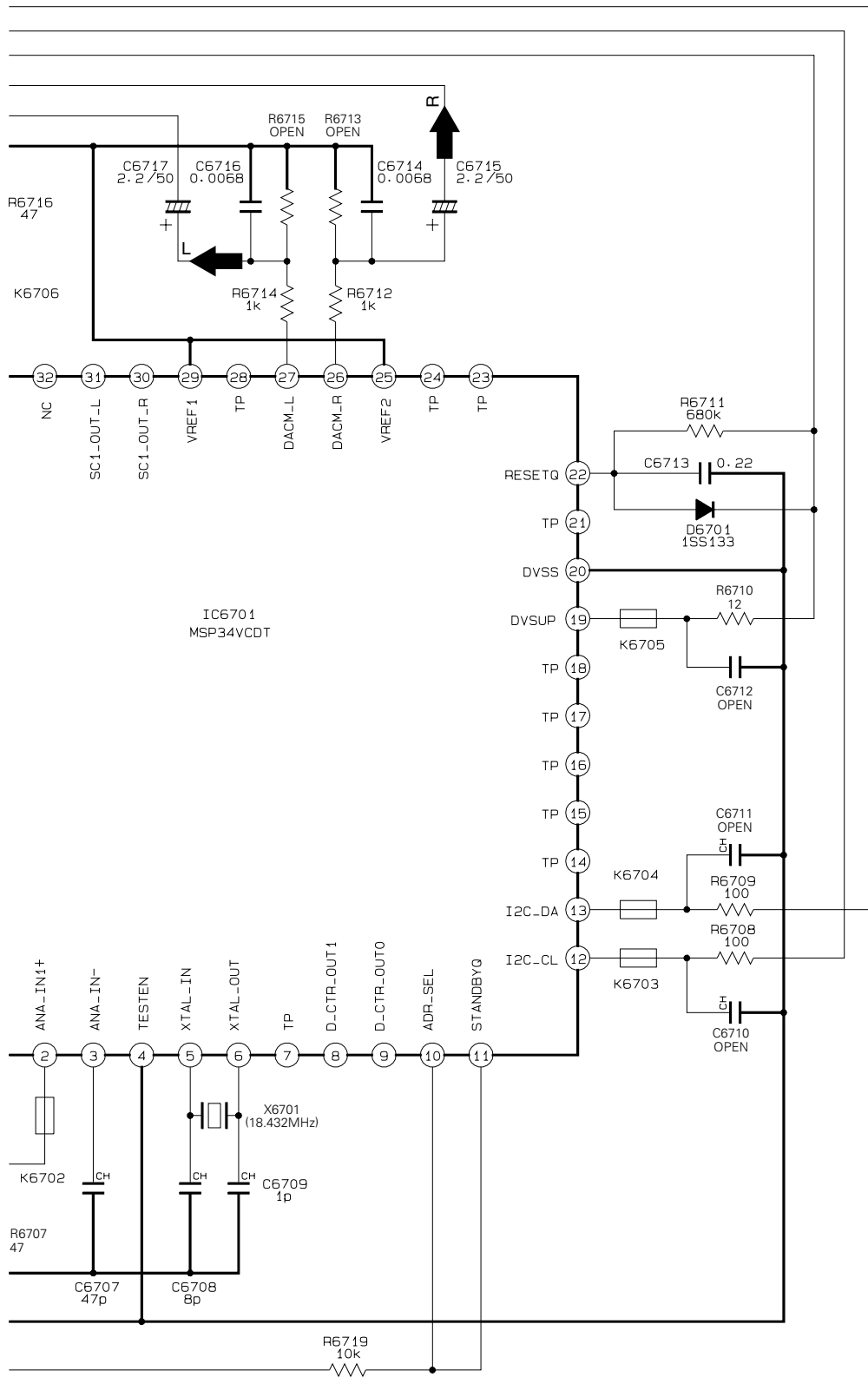
D

NOTE : When ordering parts, be sure to order according to the Part Number indicated in the Parts List.

NOTE : How to find the page showing the continuative schematic diagram

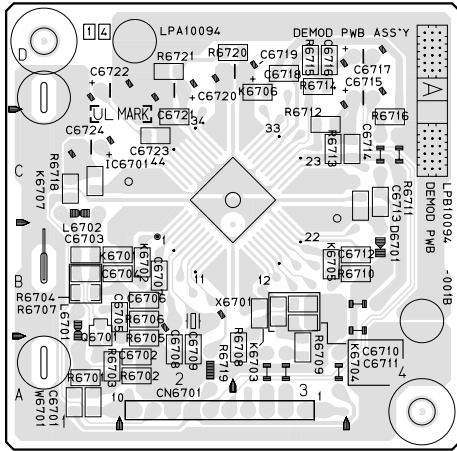
Example) TO SYSCON (Page 4-*) : Refer to the HR-J670EU service manual (NO.82784)

TO SYSCON (Page 4-*) : Refer to this service manual



4.3 DEMODULATOR CIRCUIT BOARD

<14>DEMOM
LPB10094-001B



COMPONENT PARTS LOCATION GUIDE
< DEMODULATOR >

REF.NO.	LOCATION	REF.NO.	LOCATION	REF.NO.	LOCATION
CAPACITOR		CONNECTOR		R6711	B C 4C
C6701	B C 1A	CN6701	A D 3A	R6712	B C 3C
C6702	B C 2A	DIODE		R6713	B C 3C
C6703	B C 1B	D6701	A D 4B	R6714	B C 3D
C6704	B C 1B	IC		R6715	B C 3D
C6705	B C 2B	IC6701	B C 3C	R6716	B C 4C
C6706	B C 2B	COIL		R6718	B C 1C
C6707	B C 2B	L6701	A D 1A	R6719	A D 2A
C6708	B C 2A	L6702	A D 1C	R6720	B C 3D
C6709	B C 2A	OTHER		R6721	B C 2D
C6710	B C 3B	TRANSISTOR		K6701	B C 1B
C6711	B C 3B	Q6701	B C 1B	K6702	B C 2B
C6712	B C 4B	RESISTOR		K6703	B C 3B
C6713	B C 4C	R6701	B C 1A	K6704	B C 3B
C6714	B C 4C	R6702	B C 2A	K6705	B C 3B
C6715	A D 4D	R6703	B C 1A	K6706	B C 3D
C6716	B C 3D	R6704	B C 1B	K6707	B C 1C
C6717	A D 4D	R6705	B C 2A	X6701	A D 2B
C6718	B C 3D	R6706	B C 2B		
C6719	A D 3D	R6707	B C 1B		
C6720	A D 2D	R6708	B C 3A		
C6721	B C 2C	R6709	B C 3A		
C6722	A D 1D	R6710	B C 4B		
C6723	B C 2C				
C6724	A D 1C				